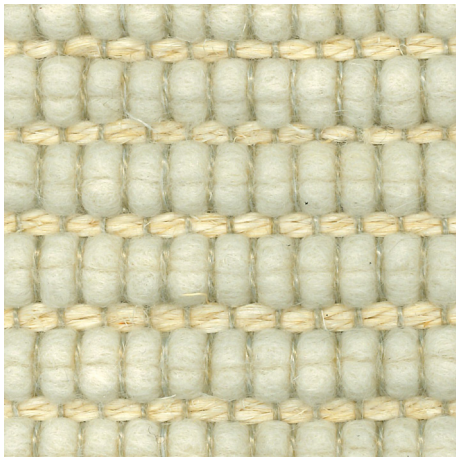


Tynn



Rug

Wool and sisal rug with jute base and 4 cm high tone-on-tone wool edge on short ends.

Available in five standard dimensions or made to measure dimension.

Loom size: min 0,70 m and max 5 m.

Dimensional tolerance: +/- 5% (max. 10 cm).

Thickness: 11 mm (circa).

+info:
<http://www.depadova.com/materials.pdf>